



Similar to figure

Data sheet

Hydraulic data

Maximum operating pressure P_N	10 bar
Min. fluid temperature T_{min}	-20 °C
Max. fluid temperature T_{max}	130 °C

Materials

Pump housing	Grey cast iron
Impeller	PP-LGF50
Shaft	Stainless steel
Bearing	Carbon-graphite

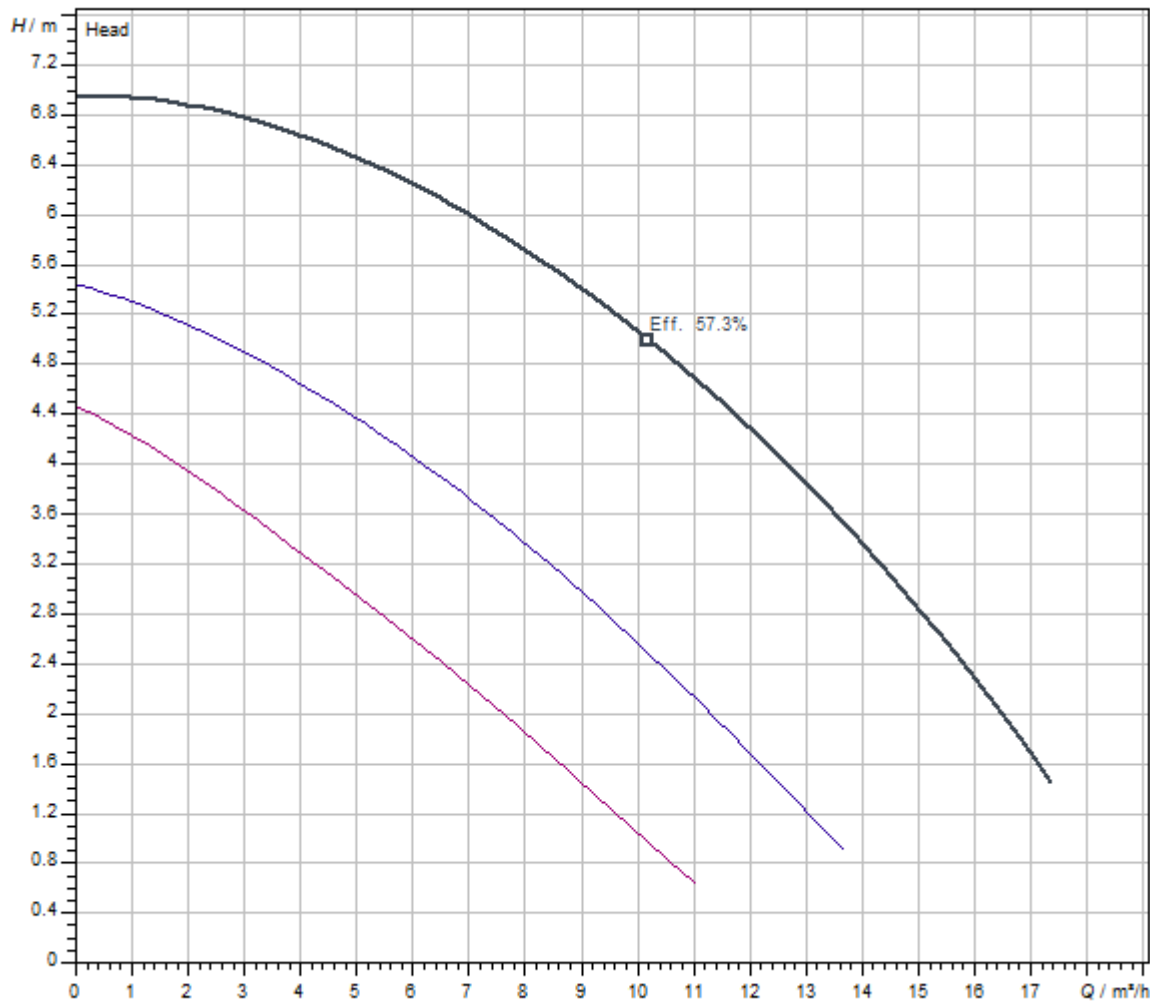
Motor data

Mains connection	3~400 V, 50 Hz
Rated current I_N	0.76 A
Max. speed n_{max}	2600 1/min
Power consumption P1(Q=max.) of selected impeller * number of pumps P1	370 W
Emitted interference	EN 61000-6-3
Interference resistance	EN 61000-6-2
Protection class motor	IPX4D

Installation dimensions

Pipe connection on the suction side DN_s	DN 40
Port-to-port length L_0	250 mm

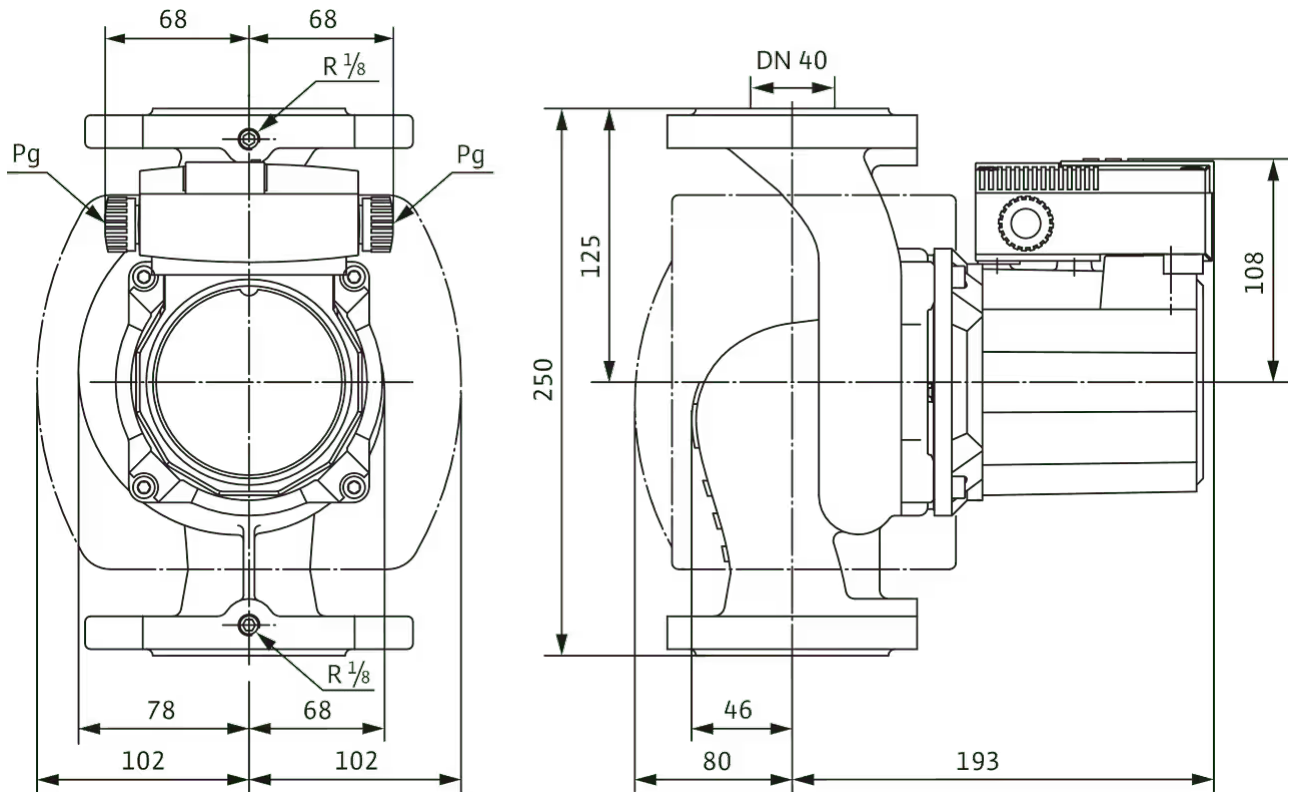
Pump curves

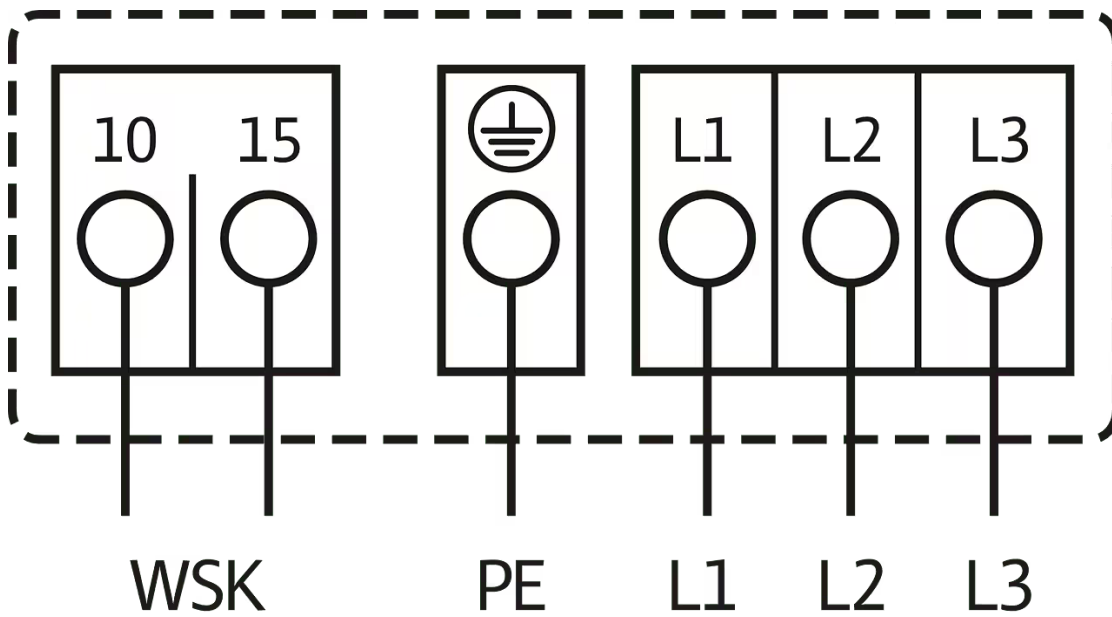


Fluid media	Water 100 %
Fluid temperature <i>T</i>	20.00 °C
speed at duty point <i>n hydr. @ OP</i>	2,600 1/min

Dimensions and dimensions drawings

TOP-S



Wiring diagram

Mains connection, 3~400 V, 50 Hz

3~230 V, 50 Hz (optional with switching plug 3~230 V)

WSK = thermal winding contact

Full motor protection at all speed stages with optional tripping unit

SK 602N/SK 622N or other switchgear/control devices with WSK connection option


Triggering: External tripping at switchgear/control device

Reset: Automatic fault acknowledgement after cooling off of the motor

Automatic

Ordering information

Product data

Brand	Wilo
Product description	TOP-S 40/7 (3~400/230 V, PN 6/10)
Article number	2165523 
EAN number	4048482638119
Colour	green/black
Minimum order quantity	1
Date of sales availability	2016-03-01
Previous model article number	2080043
Previous model designation	TOP-S 40/7 (3~400/230 V, PN 6/10)

Packaging

Packaging type	Cardboard box
Packaging property	Transport packaging
Pieces per pallet	45
Number per layer	9

Dimension, weight

Length with packaging	350 mm
Length <i>L</i>	250 mm
Height with packaging	260 mm
Height <i>H</i>	273 mm
Width with packaging	225 mm
Width <i>W</i>	204 mm
Gross weight, approx. <i>m</i>	12.5 kg
Net weight, approx. <i>m</i>	11 kg

Tender text

Can be used for hot-water heating systems of all kinds, industrial circulation systems, air-conditioning systems and closed cooling circuits.

Glandless circulator with screwed or flange connection, preselectable speed stages for power adjustment.

Equipment and function

- > Manual power adjustment with 3 speed stages
- > Pumps with 1~ motor:
 - > P2 up to 90 W: internal protection against unacceptably high winding temperatures
 - > P2 \geq 180 W: Full motor protection with thermal winding contacts in conjunction with tripping unit (optional: SK 602N/SK 622N)
- > Pumps with 3~ motor:
 - > P2 up to 90 W: internal protection against unacceptably high winding temperatures
 - > P2 \geq 180 W: Full motor protection with thermal winding contacts in conjunction with tripping unit (optional: SK 602N/SK 622N)
 - > Mains connection 3~, 230 V with optional switching plug
- > Cathaphoretic-coated pump housing for optimal corrosion protection
- > PN 6/PN 10 combination flange (for DN 40 to DN 65)
- > Thermal insulation shell for heating applications

Operating Data

Min. fluid temperature T_{\min}	-20 °C
Max. fluid temperature T_{\max}	130 °C
Min. ambient temperature T_{\min}	-20 °C
Max. ambient temperature T_{\max}	40 °C
Maximum operating pressure PN	10 bar

Motor data

Emitted interference	EN 61000-6-3
Interference resistance	EN 61000-6-2
Mains connection	3~400 V, 50 Hz
Power consumption $P_{1\max}$	370 W
Max. speed n_{\max}	2600 1/min
Rated current I_N	0.76 A
Protection class motor	IPX4D


Materials

Pump housing	Grey cast iron
Impeller	PP-LGF50
Shaft	Stainless steel
Bearing	Carbon-graphite

Installation dimensions

Pipe connection on the suction side DN_s	DN 40
Pipe connection on the discharge side DN_d	DN 40
Port-to-port length L_0	250 mm

Ordering information

Brand	Wilo
Product description	TOP-S 40/7 (3~400/230 V, PN 6/10)
Net weight, approx. m	11 kg
Article number	2165523 

Mechanical accessories

Pipe installation

Counter flange kit

DN 40, PN 6 counter flange kit	2105578
DN 40, PN 10 counter flange kit	2105579

Pipe installation, adapter fitting

Adapter set glanded pumps

Adapter A40-60 Set, DN 40x60mm, PN 16	2085210
Adapter A40-100 Set, DN 40x100mm, PN 16	2085211
Adapter A40-40 kit, DN 40x40mm, PN 16	2117416
Adapter A40-160 kit, DN 40x160mm, PN 16	2119558

Intermediate flange connecting piece F

Intermediate flange pieces F 1, DN 40x30mm, PN 6	110586593
Intermediate flange pieces F 1, DN 40x30mm, PN 10/16	110586696
Intermediate flange pieces F 0, DN 40x15mm, PN 6	110842497
Intermediate flange pieces F 0, DN 40x15mm, PN 10/16	110842590
Intermediate flange pieces F 26, DN 40x50mm, PN 6	110851098
Intermediate flange pieces F 26, DN 40x50mm, PN 10/16	110851190

Electrical accessories

Pump control/accessories

Antenna GSM/GPRS

D-network dual-band antenna with 3 m cable	2533862
D-network tri-band antenna 10 m cable	2533863
D-network tri-band antenna 15 m cable	2533864
SMA/FME adapter	2545548

BMS base module

BMS base module	2533800
-----------------	---------

CC communication module BACnet

CC-communication module BACnet MS/TP (slave)	2537050
CC-communication module BACnet IP (slave)	2537051

Communication module CC

CC communication module	2533850
-------------------------	---------

Communication module GSM

GSM module	2533861
------------	---------

Communication module GSM (SC)

Communication module GSM (SC)	2542216
-------------------------------	---------

Communication module LON

Communication module LON	2533868
--------------------------	---------

Communication module LON (SC)

Communication module LON (SC)	2538243
-------------------------------	---------

Communication module ModBus

Communication module Modbus RTU	2533869
---------------------------------	---------

Communication module Profibus

Communication module Profibus DP	2533866
----------------------------------	---------

Connection cable control modules/signalling modules

Control modules connecting cable	2533790
Signalling modules connecting cable	2533890

DDG impulse selector

DDG impulse selector	2533770
Outdoor temperature sensor Pt 100	
Outdoor temperature sensor Pt 100	2533772
Pump signalling module	
Signalling module pump 1-2	2533812
Signalling module pump 3-6	2533836
SC communication module BACnet	
SC-communication module BACnet MS/TP (slave)	2538242
SC-HVAC signal board	
SC-HVAC signal board	2119646
Signal converter retrofit kit	
Signal converter 0-10 V / 0-20 mA	2534992
Temperature module	
Temperature module for systems with 4-6 pumps	2533771
Temperature module for systems with 1-3 pumps	2534991
Differential pressure detection	
DDA	
Display unit for diff. pressure DDA 16	502856499
Display unit for diff. pressure DDA 6	503003598
Display unit for diff. pressure DDA 40	503217592
DDG (4-20mA)	
Wilo-DDG 10 Signal Trans.(4-20mA)2G VP.	2136454
Wilo-DDG 20 Signal Trans.(4-20mA)2G VP.	2136456
Wilo-DDG 40 Signal Trans.(4-20mA)2G VP.	2136458
Wilo-DDG 60 Signal Trans.(4-20mA)2G VP.	2136460
Wilo-DDG 100 Signal Trans.(4-20mA)	2211740
DDG power supply unit	
DDG power supply unit	501865293
DDG transducer	
DDG transducer	501771990

Motor protection

PTC thermistor tripping unit

PTC thermistor tripping unit	509275993
------------------------------	-----------

SK 602N

Switchgear SK 602N	2120444
--------------------	---------

SK 622N

Switchgear SK 622N	2120445
--------------------	---------

Plug

Switching plug N

Switching plug "N"	2040655
--------------------	---------

Services

With Wilo as your partner, you can not only be sure of choosing high-quality product solutions, but also of benefiting from a comprehensive, worry-free package of well thought-out services. We collaborate to develop a service concept tailored to your individual needs; with our expertise and personal consultancy, we make sure that the operation of your systems is as energy-efficient, reliable and economical as possible. All the while our competent Wilo service technicians are ready to assist you with fast, reliable and on-time support.

Recommended services

Wilo-Live Assistant Service	2216415
System Optimisation Glandless pumps	2219250
Energy Solutions Glandless pumps	2219285

More suitable services

Extended Warranty Glandless pumps	2219589
Supervision Glandless pumps	2219320
Commissioning Glandless pumps	2219390
Maintenance BASIC Glandless pumps	2219530
Maintenance COMFORT Glandless pumps	2219416
Maintenance PREMIUM Glandless pumps	2219545
Repair Glandless pumps	2219609